

Building an Upstream Data Management & Visualization Application

CUSTOMER
Pertamina

INT PRODUCT
[HTML5Viewer](#)

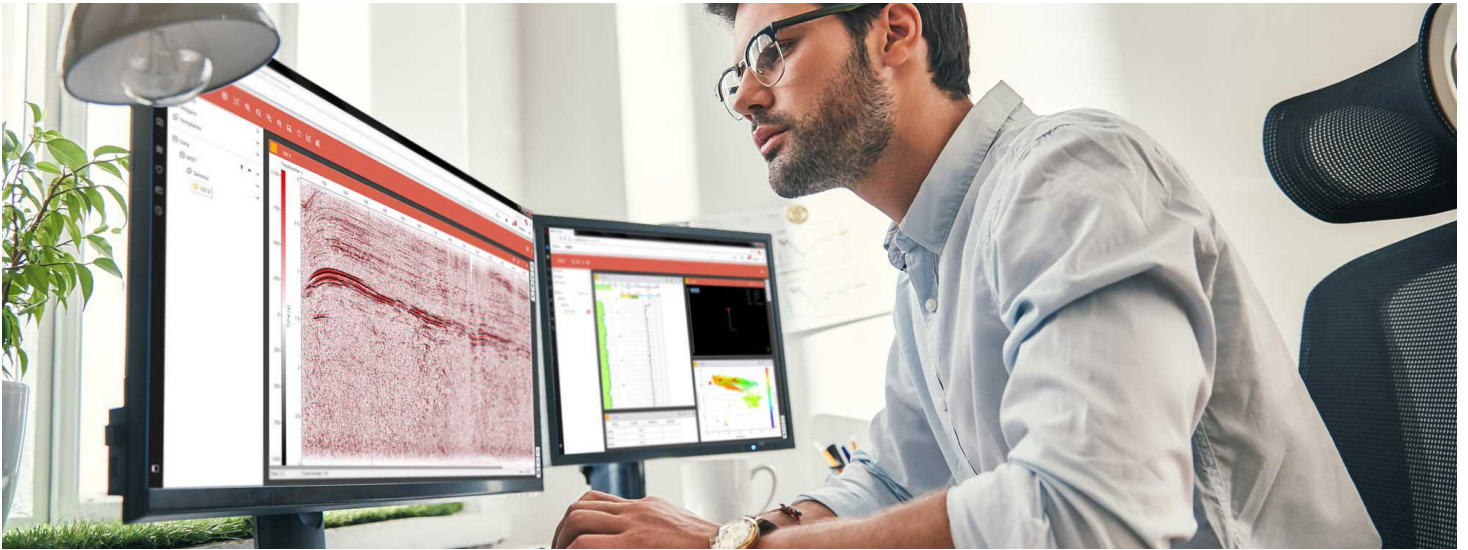
INDUSTRY
Exploration and
Production

WEBSITE
pertamina.com

With more than six decades of experience in the energy industry, PT Pertamina (Persero) is the second-largest crude oil producer in Indonesia. Engaged in oil and gas business activities from the Upstream Sector to the Downstream Sector, Pertamina is committed to meeting the demands of their consumers, creating sustainable business growth, and becoming a world-class national energy company.

CHALLENGE

Pertamina built their Manajemen Data Terintegrasi (MDT) Platform, a master upstream data platform based on an open data model (PPDM), to be used by engineers and management to access data quickly and precisely. They had integrated several upstream data management databases and platforms, but they lacked the ability to visualize their data. They needed an off-the-shelf solution that would allow them to quickly and easily display seismic and log data in 2D/3D.



INT SOLUTION

When they contacted INT, Pertamina had all of the architecture, security, user management, GIS implementation, data management, and search aspects of their platform already in place. The only missing piece was visualization. Building that piece from scratch would have put their project behind schedule and over budget.

With more than 30 years of expertise in upstream data visualization, INT offered not only a turnkey visualization solution, but also an expert team of developers with the experience to connect

disparate data types and handle any technical challenges with ease.

Pertamina chose to integrate INT's web-based HTML5Viewer into their platform, which has enabled them to display their data quickly and easily in any web browser, while maintaining the confidentiality, integrity, and availability of their data. Thanks to strong, efficient collaboration between INT and the Pertamina UTC group, implementation took only about a week and allowed the project to be completed on time.

“Utilizing the viewer tool is extremely helpful for engineers to view data quickly without having to retrieve the data from the data center. The work location that stretches from the western end to the eastern end of Indonesia is no longer an obstacle for the Company’s engineers to access data.”

*— **Suwarta**, Assistant Manager Upstream Data Science,
 Lead of Pertamina Upstream Data Center (PUDC)
 Pertamina Upstream Technical Center*

ABOUT INT

For more than 30 years, INT has been a leading software provider of Advanced Data Visualization solutions and platforms used in business applications for Upstream E&P and other technical industries. INT Software uses the latest technologies such as HTML5 and JavaScript to enable cloud-friendly and mobile-responsive solutions.